



Swansea Domestic Abuse

Action Plan

2015 - 16



SCOPE & PURPOSE

Swansea has a 3yr Domestic Abuse Delivery Plan (2014 – 2017), which details our plans to combat domestic abuse and violence against women locally. Annual Action Plans will complement the 3 year Plan and allow us to be more precise in our focus and outcomes. This year's Action Plan includes a RAG (Red, Amber & Green) scoring system to show where we are in our work.

PRIORITY AREAS

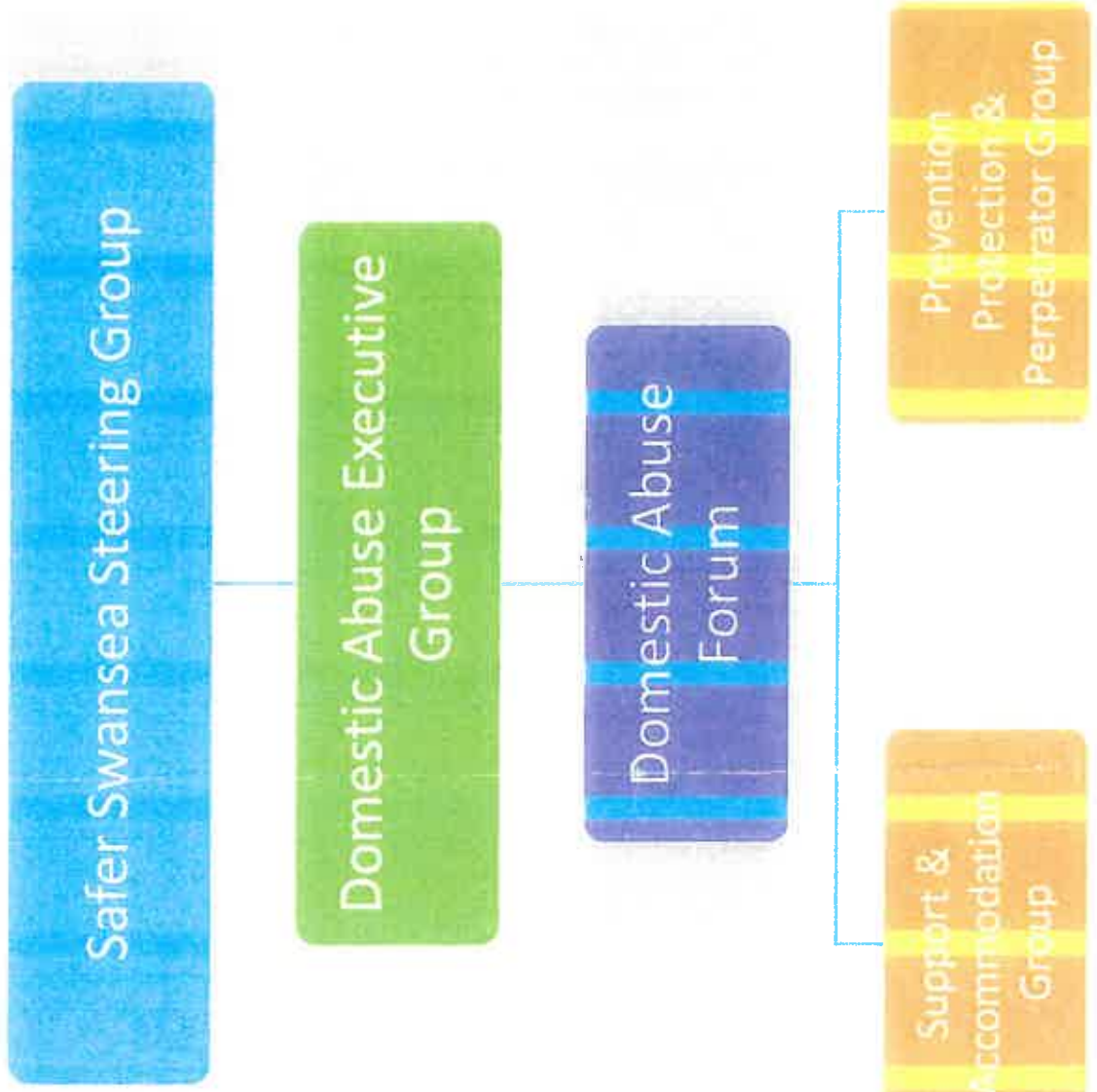
This year's Action Plan has 5 priority areas, which will see us focus our work and target our efforts more precisely. They have been identified as;

1. **TRAINING** – we plan to develop a Training Directory and deliver training on domestic abuse and violence against women across a wide range of service areas at different levels.
2. **PREVENTION & EARLY INTERVENTION** – we will continue to work closely with Child & Family services and PEI teams to develop appropriate intervention responses. We aim to build on our existing work in schools, youth clubs etc to enable all children and young people to receive sessions on healthy relationships and respect. The new Violence Against Women, Domestic Abuse and Sexual Violence Bill due out this year will have some mandatory duties placed on education which will enhance our work.
3. **HIGH RISK WORK** – our work with those at highest risk of harm continues to be seen and accredited as best practice in the UK. We want to build on that by ensuring that we have long term stable funding for our IDVA (Independent Domestic Violence Advisor) Project.
4. **HARD TO REACH GROUPS** – we want to ensure that we are able to support ALL citizens of Swansea. We will look at specific groups of people that we know are under-represented in our service, and will include LGBT, black and minority ethnic, older people and people with disabilities.
5. **RAISING AWARENESS** – we will work at developing a stronger media profile by improving our links with local newspaper and radio stations. This will include a higher profile for our campaigns. The opening of the new Domestic Abuse One Stop shop this year will enable this higher profile.

DOMESTIC ABUSE ONE STOP SHOP

The opening of our Domestic Abuse One Stop Shop during this period will enhance our multi-agency work and enable us to have a central point of focus for our work.

SWANSEA DOMESTIC ABUSE FORUM STRUCTURE CHART



Domestic Abuse work reports
to here

Decision making and
monitoring body

Information sharing and
awareness raising forum

Sub Groups where focussed
tasks are completed

1. Prevention and Raising Awareness of Violence against Women and Domestic Abuse

What Will We Do?	What is The Outcome?	How is it Measurable?	Responsibility	RAG
Continue to provide the Freedom Programme and the Recovery Toolkit in a multi-agency coordinated approach.	Women gain a better understanding of the dynamics of abuse and develop an ability to recognise unhealthy relationships earlier.	Record the number of programmes being run and the number of women attending.	Hafan Cymru Swansea Women's Aid PP&P OSS	G
Continue to provide preventative programmes for parents in a more coordinated approach. Engage in a Scoping Exercise to look at what Preventative Programmes are currently being run. Cost each Programme and look at funding avenues to apply for more funds.	Parents learn how to nurture themselves and gain the ability to nurture their children and learn how unhealthy relationships affect children. Identify any gaps in provision/overlaps/possible collaboration of programmes. Appropriate use of funds, best practice.	Record the number of programmes being run and the number of parents attending. Record the number of children in each family unit. Look at outcomes of Scoping Exercise.	Hafan Cymru Action For Children Child & Family Family Partnership Team BAWSO PP&P DA Coordinator	A
Look at setting up some of the Preventative Programmes at the One Stop Shop (OSS).	A centralised venue for a multi-agency approach to preventative work.	Ensuring that the process is started.	One Stop Shop Manager	G
Identify areas where there are reported incidents of domestic abuse and where we do not currently have a presence or have very little presence in the local school. Make inroads into those schools.	The concept of 'healthy relationships' and teenage abuse is discussed amongst young people. Ability to recognise unhealthy relationships earlier. Page 2	Record the number of sessions with those schools identified as being an issue.	SPECTRUM workers RAY Project workers DA Coordinator PP&P	G

<p>Provide training to, and engage teachers and head-teachers in the issues around domestic abuse</p>	<p>Teachers are able to recognise the signs and symptoms of domestic abuse in children. Better outcomes for children.</p>	<p>Record the number of schools contacted, and teachers trained.</p>	<p>SPECTRUM workers RAY Project workers</p>	<p>A</p>
<p>Make provision for the new Ending Violence Against Women, Domestic Abuse and Sexual Violence Bill (Wales). There will be mandatory duties focussed on education.</p>	<p>We encompass the new regulations and guidance into our working practice. A stronger influence when accessing schools.</p>	<p>*We are as yet unsure as to exactly how this new Bill will impact on our work. This will be looked at once the Bill is in force.</p>	<p>DA Coordinator Executive Group SPECTRUM workers RAY Project workers</p>	<p>R</p>
<p>Ensure we continue to include LGBT&T issues within the scope of our work, especially in schools' work and with young people. Make contact with the LGBT 'Y-Hub' and Tawe Butterflies.</p>	<p>We ensure that people in same sex relationships do not miss out on vital support and information. We ensure that young people's ideas around same sex relationships are healthy. We ensure young people can ask for support and information around abuse in LGBT relationships.</p>	<p>Confirm with project workers that all schools' work sessions cover LGBT issues.</p>	<p>SPECTRUM workers RAY project workers DA Coordinator</p>	<p>G</p>
<p>Put together a 'Directory Of Services' and look at producing a range of leaflets for LGT&T, Children & Young People for eg</p>	<p>We ensure that consistent information on a wide range of services is available to all across the whole of the area.</p>	<p>Confirmation of availability of Directory.</p>	<p>DA Coordinator</p>	<p>R</p>
<p>Develop a 'Training Directory' of issues around domestic abuse and violence against women using a standardised model for each level. Ensure we make</p>	<p>To develop a consistent approach towards training. To deliver a consistent message across all agencies which include social</p>	<p>Record the number of training sessions being delivered and to what agencies.</p>	<p>DA Coordinator Executive Group DASAG</p>	<p>A</p>

<p>provision for WG's new Training Framework in this model.</p>	<p>services, housing departments, colleges etc.</p>		
<p>Continue to look at housing and tenancy needs of perpetrators, especially on release from custody. Look at what these needs are, especially in terms of new housing.</p>	<p>Appropriate accommodation secured. Increased safety for victims.</p>	<p>Record the types of housing support identified. Monitor where perpetrators are going to live after release from custody.</p>	<p>DASAG HMP DA Group PP&P</p> <p>A</p>
<p>Explore other options for perpetrators; for example, peer support groups such as Men's Sheds. Ensure the needs of female perpetrators are taken into account.</p>	<p>To develop appropriate community interventions and support for perpetrators of abuse.</p>	<p>Record the types of interventions and support identified.</p>	<p>DASAG HMP DA Group PP&P</p> <p>A</p>

2. Providing Support for Victims and Children

What Will We Do?	What is The Outcome?	How is it Measurable?	Responsibility	RAG
Evaluate the Swansea Women's Aid pilot refuge 'Crisis Room' which can be accessed by police, housing, social services and health. This is support for a maximum of 3 weeks.	Addressing an existing gap in service. Looking at new ways of working.	Record number of women accessing the room. Record length of stay.	Swansea Women's Aid Supporting People DASAG	G
Review the DA Safety & Security Scheme	A more accessible, streamlined service that enables people experiencing abuse to remain in their own homes.	Record number of referrals. Record number of interventions. Record number of people feeling safer.	Supporting People	G
Look at ways of improving links with services out of county, especially in the Western Bay footprint.	Maintaining specialist support for women accessing refuge out of county (mental health, substance misuse etc).	Ensure all relevant links are made in other local authority areas.	DASAG Executive Group	R
Consider the implications of the Renting Homes Bill and Housing Bill.	Working in a more preventative way to Improve housing outcomes for people experiencing domestic abuse.	Look at numbers of evictions, length of stay at refuge etc.	DASAG	A
Continue to work closely with the DWP and Welfare Rights Unit.	Receiving up to date information on welfare reform, especially the impact of Universal Credit. Improved support and information for people accessing our services.	Look at any issues (positive or negative) arising from welfare reform.	DASAG	A

<p>Look at the issue of women with no recourse to public funds.</p>	<p>Improved outcomes and support for women accessing our refuge and safe house provision. Improved knowledge and confidence of support providers on this issue.</p>	<p>Numbers of women accessing our services include numbers from within the EU.</p>	<p>DASAG</p>	R
<p>Look at establishing an agreement for responsibility of expenses when women travel to Refuge & Safe House provision.</p>	<p>Women receiving timely, appropriate transport provision. Refugees having confidence in who is responsible for payment.</p>	<p>Number of Refugees and other agencies that sign up to the Agreement.</p>	<p>DASAG</p>	A
<p>Monitor effectiveness of Refuge & Safe House provision.</p>	<p>Women receive an appropriate, effective and 'fit for purpose' service.</p>	<p>Look at quantitative and qualitative data. Look at specific outcomes data. Look at feedback forms. Look at Data Monitoring Form.</p>	<p>DASAG Swansea Women's Aid BAWSO Executive Group</p>	A

3. Improving the Response of Criminal Justice Agencies

What Will We Do?	What is The Outcome?	How is it Measurable?	Responsibility	RAG
Continue to organise training sessions for Magistrates' Bench, prosecutors and solicitors at the Specialist Domestic Violence Court.	Improved knowledge and understanding of DA issues for professionals. Improved outcomes for people experiencing DA and going through the court process. Appropriate measures taken against perpetrators.	Look at court outcome data and Crown Prosecution Service attrition rates. Number of professionals trained.	SDVC Steering Group	G

4. Improve the Response of the Health Service and Other Agencies

What Will We Do?	What is The Outcome?	How is it Measurable?	Responsibility	RAG
<p>Ensure agencies across Swansea have 'Domestic Abuse Workplace Policies' in place as part of WG's 10,000 Safer Lives.</p>	<p>Better understand of domestic abuse across all agencies. Improved response and outcomes for workers experiencing domestic abuse. Systems in place for smooth roll out of Policies.</p>	<p>Numbers of agencies who have Policies in place.</p>	<p>DA Coordinator Executive Group</p>	<p>G</p>
<p>Ensure support is given to those agencies looking to establish or update their 'Workplace Policies'.</p>	<p>Consistent Policies across all agencies based on Welsh Government recommendations.</p>	<p>Number of agencies supported.</p>	<p>DA Coordinator</p>	<p>G</p>
<p>Offer training on domestic abuse and violence against women to agencies. This will include specialist areas of work and general awareness raising.</p>	<p>Better understanding of domestic abuse and improved confidence across all agencies. Improved response and outcomes for service users.</p>	<p>Number of agencies supported.</p>	<p>DA Coordinator</p>	<p>G</p>

ACTIONS COMPLETED (2014-15)

THE DOMESTIC ABUSE ONE STOP SHOP

Swansea's new Domestic Abuse OSS was opened to the public in March 2015. This has been a long awaited arrival and has taken 3 years of hard work by the OSS Steering Group. The OSS is a multi-agency Centre for anyone affected by domestic abuse and violence against women. It offers a range of services, from a daily drop-in to activities such as Tai Chi, the Freedom Programme and Self Defence. There will also be surgeries by other agencies such as Shelter, legal advice etc. The Centre will be staffed by a multi-agency team with Hafan Cymru being the lead agency.

WHITE RIBBON TOWN AWARD

Swansea was successful in gaining the White Ribbon Town Award in September 2014, with the DA Coordinator accepting the Award at the Senedd in Cardiff. This is a huge achievement and acknowledges all the work that we are doing with boys and men to raise awareness of and prevent violence against women and girls.

WHITE RIBBON DAY (ELIMINATION OF VIOLENCE AGAINST WOMEN)

We had our most successful White Ribbon Day to date (November 25th 2014), which was held at the Civic Centre. The event was attended by a wide range of dignitaries including the Lord Mayor and Leader of the Council and players from the Swans and the Ospreys. INFONATION held its 'These Hands Are Not For Hurting' workshop and the Fire Service attended with a fire engine draped in a huge white ribbon. There were stalls with information and resources and staff from a number of domestic abuse agencies on hand for information and support. The event was highlighted in the Evening Post.

Choose2Change
Non-mandated Domestic Abuse Perpetrator Programmes

HMP Swansea, in conjunction with key community partners, is now offering an intervention to men over 18 who have displayed abusive behaviour towards their partner or ex-partner, which provides them with an opportunity to change.

The course is voluntary and consists of 32 group sessions of 8 – 12 participants which are designed to help men to:

- Identify and change controlling patterns of behaviour, including physical violence, emotional, financial and sexual abuse;
- Increase their understanding of domestic abuse and its effects;
- Increase their motivation to change;
- Identify and address the attitudes and beliefs that have supported their abuse;
- Accept full responsibility for their behaviour;
- Develop appropriate ways of dealing with difficult situations.

Alongside this intervention runs a support package for the partner (or ex-partner) and any children of the perpetrator. Initial contact is made before the perpetrator is approved for the course and family support work is offered, along with signposting to other appropriate agencies throughout the programme to ensure their safety and wellbeing.

Each course participant is assessed on an individual basis to establish their suitability for the course. Referrals may be made from within the prison, from probation or any other support agencies that have recognised domestic abuse as an issue. As this is a voluntary intervention, the perpetrator may also self-refer. We would ask that the person that you are referring is aware that you are making the referral and that he has consented to take part on a voluntary basis.

Criteria for acceptance onto the course are:

- The man is able to acknowledge his use of violence;
- He is able to see that his use of violence is a problem in and of itself;
- He is able to accept responsibility for ending his use of violence;
- His emotional and psychological wellbeing and current or previous mental health problems will not prevent him from benefitting from the programme;
- He understands the conditions that apply to his attendance on the programme;
- His attendance is not likely to increase significantly the risk to the safety of his (ex)-partner, his children or others.

For more information, or to refer a client to the course, please contact:

Choose2Change Non-mandated Domestic Abuse Perpetrator Programmes

HMP Swansea, in conjunction with key community partners, is now offering an intervention to men over 18 who have displayed abusive behaviour towards their partner or ex-partner, which provides them with an opportunity to change.

The course is voluntary and consists of 32 group sessions of 8 – 12 participants which are designed to help men to:

- Identify and change controlling patterns of behaviour, including physical violence, emotional, financial and sexual abuse;
- Increase their understanding of domestic abuse and its effects;
- Increase their motivation to change;
- Identify and address the attitudes and beliefs that have supported their abuse;
- Accept full responsibility for their behaviour;
- Develop appropriate ways of dealing with difficult situations.

Alongside this intervention runs a support package for the partner (or ex-partner) and any children of the perpetrator. Initial contact is made before the perpetrator is approved for the course and family support work is offered, along with signposting to other appropriate agencies throughout the programme to ensure their safety and wellbeing.

Each course participant is assessed on an individual basis to establish their suitability for the course. Referrals may be made from within the prison, from probation or any other support agencies that have recognised domestic abuse as an issue. As this is a voluntary intervention, the perpetrator may also self-refer. We would ask that the person that you are referring is aware that you are making the referral and that he has consented to take part on a voluntary basis.

Criteria for acceptance onto the course are:

- The man is able to acknowledge his use of violence;
- He is able to see that his use of violence is a problem in and of itself;
- He is able to accept responsibility for ending his use of violence;
- His emotional and psychological wellbeing and current or previous mental health problems will not prevent him from benefitting from the programme;
- He understands the conditions that apply to his attendance on the programme;
- His attendance is not likely to increase significantly the risk to the safety of his (ex)-partner, his children or others.

For more information, or to refer a client to the course, please contact:

Choose2Change Non-mandated Domestic Abuse Perpetrator Programmes

HMP Swansea, in conjunction with key community partners, is now offering an intervention to men over 18 who have displayed abusive behaviour towards their partner or ex-partner, which provides them with an opportunity to change.

The course is voluntary and consists of 32 group sessions of 8 – 12 participants which are designed to help men to:

- Identify and change controlling patterns of behaviour, including physical violence, emotional, financial and sexual abuse;
- Increase their understanding of domestic abuse and its effects;
- Increase their motivation to change;
- Identify and address the attitudes and beliefs that have supported their abuse;
- Accept full responsibility for their behaviour;
- Develop appropriate ways of dealing with difficult situations.

Alongside this intervention runs a support package for the partner (or ex-partner) and any children of the perpetrator. Initial contact is made before the perpetrator is approved for the course and family support work is offered, along with signposting to other appropriate agencies throughout the programme to ensure their safety and wellbeing.

Each course participant is assessed on an individual basis to establish their suitability for the course. Referrals may be made from within the prison, from probation or any other support agencies that have recognised domestic abuse as an issue. As this is a voluntary intervention, the perpetrator may also self-refer. We would ask that the person that you are referring is aware that you are making the referral and that he has consented to take part on a voluntary basis.

Criteria for acceptance onto the course are:

- The man is able to acknowledge his use of violence;
- He is able to see that his use of violence is a problem in and of itself;
- He is able to accept responsibility for ending his use of violence;
- His emotional and psychological wellbeing and current or previous mental health problems will not prevent him from benefitting from the programme;
- He understands the conditions that apply to his attendance on the programme;
- His attendance is not likely to increase significantly the risk to the safety of his (ex)-partner, his children or others.

For more information, or to refer a client to the course, please contact: